



JDV CONTROL VALVES CO., LTD.

Technology For The Professionals.

JDV CONTROL VALVES CO.,LTD.

**Installation, Operation and Maintenance
V-Port Segment Control Valve**

VERSION: V 1.1

ISSUING DATE: 2018/02/26

REVISED DATE: 2021/09/10



NO.6-1, QINGNIAN ROAD, YANGMEI DISTRICT, TAOYUAN CITY 326 , TAIWAN

TEL: +886-3-4965066

FAX: +886-3-4965300

HTTP://www.jdv.com.tw



JDV CONTROL VALVES CO., LTD.

Technology For The Professionals.

JSB-F/JSB-M V-Port Segment Control Valve Instructions for Installation, Operation and Maintenance

Contents

OVERVIEW	3
NOTES PRIOR TO USE	4
NOTES PRIOR TO USE	4
SAFETY NOTIFICATION:	5
PRODUCT TRANSPORTATION/STORAGE/MAINTENANCE	6
TRANSPORTATION	6
STORAGE & MAINTENANCE	7
PRESERVING OF NON-PACKED/UNPACKED VALVE	7
NOTES FOR PREPARATION OF INSTALLATION	8
NOTES PRIOR TO OPERATION	9
MAINTENANCE AND TROUBLESHOOTING	10
JSB-F/ JSB-M STRUCTURE DIAGRAM :	12
JSB-F/ JSB-M EXTENDED STRUCTURE DIAGRAM.....	13
PROCEDURE OF DISASSEMBLING AND ASSEMBLAGE	14
JSB-F / JSB-M DISASSEMBLING PROCEDURE.....	15
JSB-F / JSB-M –EXTENDED DISASSEMBLING PROCEDURE	15
JSB-F /JSB-M ASSEMBLAGE PROCEDURE	16
JSB-F / JSB-M –EXTENDED ASSEMBLAGE PROCEDURE.....	17



NO.6-1, QINGNIAN ROAD, YANGMEI DISTRICT, TAOYUAN CITY 326 , TAIWAN

TEL: +886-3-4965066

FAX: +886-3-4965300

HTTP://www.jdv.com.tw



JDV CONTROL VALVES CO., LTD.

Technology For The Professionals.

Overview

JSB Series V-segment valve is the segment ball with V-notch design for both regulating and shut-off services.

Features of the product comprise:

1. **1-PC Body design:** reducing the leakage.
2. **V-segment design:** providing the large and straight path giving a high Cv even in case of fibers or particles.
3. **Trunnion design:** self-lubricating bearings making the torque lighter and life cycle longer.
4. **V-Notch design:** V-notch in the segment offering a shearing function to allow fibrous mediums or slurries to pass without any obstruction.
5. **Optional seat design:** meeting many applications.
6. **Alternative hard faces:** satisfying numerous services.
7. **Wave spring:** Spring-loaded metal seat design providing a lower torque.
8. **Removable end-cap:** making the maintenance easier.
9. **Equal percentage flow characteristics.**
10. **Spline stem design:** reducing the deadband to optimizes the control performance.
11. **Alternative end connections:** Available in flangeless (wafer) of flanged connections.
12. **ISO 5211 mounting pad.**
13. **Anti-static design.**
14. **Anti-blowout stem design.**



NO.6-1, QINGNIAN ROAD, YANGMEI DISTRICT, TAOYUAN CITY 326 , TAIWAN

TEL: +886-3-4965066

FAX: +886-3-4965300

HTTP://www.jdv.com.tw



JDV CONTROL VALVES CO., LTD.

Technology For The Professionals.



Notes prior to Use

1. Read the instructions for installation, operation, maintenance carefully before operating the product.
2. Identify the warning banners and descriptions mentioned in this document.
3. Please put the instructions for installation, operation, maintenance in an easy access site in order for query in use.

Notes prior to Use

1. Read the instructions for installation, operation, maintenance carefully before operating the product.
2. Identify the warning banners and descriptions mentioned in this document.
3. Please put the instructions for installation, operation, maintenance in an easy access site in order for query in use.

Warning Banners

Banner	Description
	This indicates a dangerous situation. Slight or moderate injury might be resulted if it is not averted.
	Death or severe injury might be resulted if such potential dangerous situation is not averted.



NO.6-1, QINGNIAN ROAD, YANGMEI DISTRICT, TAOYUAN CITY 326 , TAIWAN

TEL: +886-3-4965066

FAX: +886-3-4965300

HTTP://www.jdv.com.tw





JDV CONTROL VALVES CO., LTD.

Technology For The Professionals.

Safety Notification:

Design engineers or product users identify basic product specifications and check the compliance of valve and installation equipment in order to guarantee safe use.

Prior to installation of valve, the compliance of operating conditions (temperature, pressure, fluid characteristics, ambient conditions, installation gauges etc.) with the service conditions set for valve has to be checked and identified.

	<p>Warning Do not get beyond the limitation indicated by valve specification or technical parameters, or otherwise, death or severe injury might be resulted.</p>
	<p>Caution Valve may be used indoors or outdoors. If it is exposed to atmospheric environment, erosion of valve has to be cared, or otherwise, slight or moderate injury might be resulted.</p>



NO.6-1, QINGNIAN ROAD, YANGMEI DISTRICT, TAOYUAN CITY 326 , TAIWAN


TEL: +886-3-4965066

FAX: +886-3-4965300

HTTP://www.jdv.com.tw



Product Transportation/Storage/Maintenance

	Warning
	1. In moving or transportation, suitable tools have to be selected for correct equipment and accessories (sling, fastener, hook and so forth) in terms of size with consideration of individual weights of details in the package and the complete total weight.
	2. valve lifting and handling should be operated by qualified operators. Inappropriate lifting would result in deformation or dropping of valve to damage the valve.
	3. Do not lift the valve using the suspending point or bracket arranged on cylinder to prevent from danger. 4. Do not use the lever of the manual valve to take or lift valve. In such a way, the lever of the manual valve would fractured or depart from the valve, such that damage or human injury might be resulted.

* The product has to be packed well to avoid unnecessary damage when transportation to and storage in warehouse. Particularly, the following precautionary measures have to be cared:

Transportation

1. The openings on two sides of the valve have to be protected well using appropriate sealing cover in order to guarantee clean interior of the valve and prevent foreign objects from entry.
2. The packaging has to guarantee safe transportation to storage site. As arrival to the storage site, please identify that the covering material or packing paper or wooden case keeps in a complete status.





Storage & Maintenance

Preserving of Packed Valve

1. Protect the pack adequately to prevent the pack from damage.
2. There should be warning banners for packs to guarantee that the moving of product would not result in unnecessary damage, such as suspending center of gravity
3. Flange surface and channel opening have to be protected on the surfaces of two sides of the valve using adequate sealing patch or cover to guarantee clean interior in the valve and prevent foreign objects from entry.
4. If the used material of the valve is prone to rust, the flange surface and the channel opening have to be coated with antirust oil in order for preventing rust spots from appearing.
5. The storage site has to keep clean and dry.
6. Do not let the product to be exposed to wind/rain or to be sunned.
7. Please check preserving status regularly if the product is to be stored for a period of time.

Preserving of non-packed/unpacked valve

1. Please guarantee appropriate protection of the product in order to prevent it from damage.
2. In treating large valve, the product has to be fixed safely and stably. Suitable tools (bracket, hook, fastener, cable) should be used in transportation. In moving, balance has to be kept in order to prevent product from damage due to dropping or shaking in transportation process.





Notes for Preparation of Installation

Please follow the following instruction guidelines to guarantee and prolong product life.

1. Please disassemble the pack (wooden case or pallet) carefully in order to prevent the product and cylinder and other components from damage.
2. Before installation, remove the seal from flange opening for the air pipeline containing air filter to clean the interior of the valve. Make sure the clearance of foreign object inside.
3. Make sure that the mark on the nameplate is compliant with service condition.
4. Make sure that the flow direction on the body meets the direction of equipment pressure.
5. Make sure that all screws and nuts are secured.
6. In valve installation, please use wrench and follow diagonal sequence (Figure 1) to lock screws in order to prevent flange from deformation.

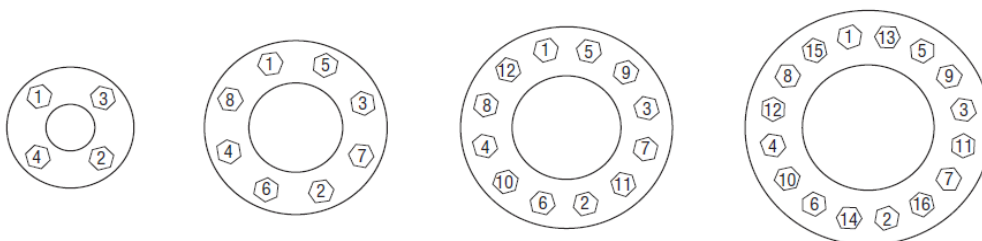
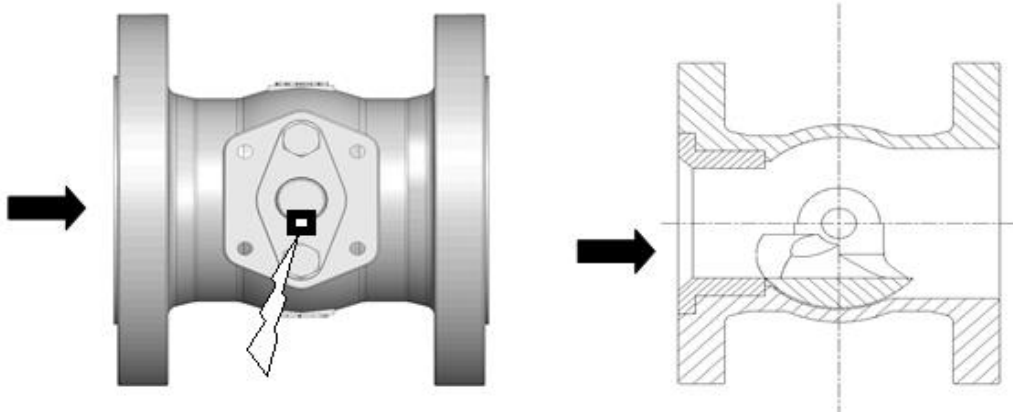


Figure 1



Notes prior to Operation

1. Over or inadequate operation would damage handle or components, or result in indirect leakage.
2. Please identify that the opened or closed position of the valve is consistent with the key way direction on the stem, handle and channel.
see (Figure 1 、 2)



(Figure 2)

Key way of open position

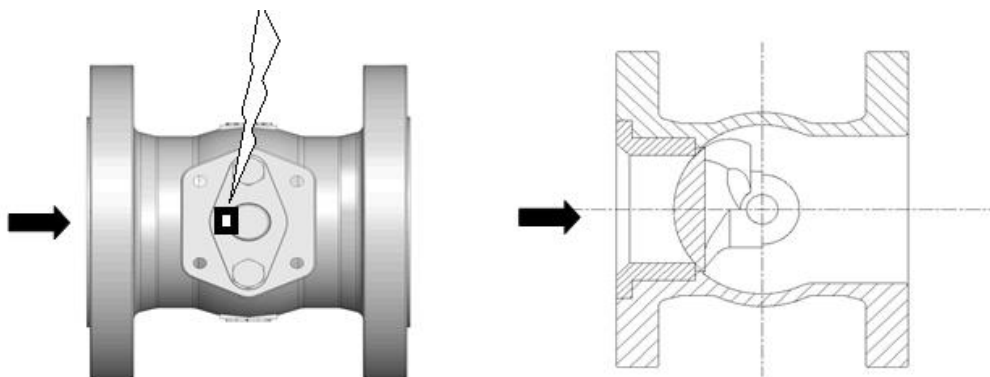


Figure 3

Key way of Close position



JDV CONTROL VALVES CO., LTD.

Technology For The Professionals.

Control valve

1. Please identify that the arrow on the gear box indicates the open position, the valve is in open status, the arrow points to closed position, and the valve is in closed status.
2. Over and inadequate operation would cause damage to components of valve or result in leakage.
3. Please operate according to the instructions in the user manual of the pneumatically manufacturer for the action valve to be opened or closed pneumatically.


Maintenance and Troubleshooting

Routine Maintenance

* Maintain routine maintenance and check to guarantee good operability.

Maintenance of gland

As the upper seal (stem) appears leakage, please fasten gland bolts uniformly until leakage stops.

	<p>Forbidden:</p> <p>Please do not overturn the Segment more than 90 degree when operating the valve in order to avoid the Seat being scratched by the Segment. If this happens, please follow the Disassembling and Assembling instructions to remove the Cover and Seat, turn the Segment back to right position, then assemble the valve parts back.</p>
---	---



NO.6-1, QINGNIAN ROAD, YANGMEI DISTRICT, TAOYUAN CITY 326 , TAIWAN

TEL: +886-3-4965066

FAX: +886-3-4965300

HTTP://www.jdv.com.tw



Troubleshooting

Area	Problem Description	Solutions
Internal Leaks	Leak at SEAT(6A)(6C)(6G)	<ol style="list-style-type: none"> 1. Please check whether the surface of ball (2) 、 soft seat (6A) 、 metal seat (6C)(6G) has scratches or any damage ◦ 2. Replace the packing(6D)(6H) when the surface of ball and valve seat has not scratches or any damage. 3. Replace the ball (2) or soft seat (6A)/METAL SEAT (6C)(6G) when the surface of ball and valve seat have scratches or any damage. 4. Disassemble it each time, need to replace the packing (6D).
External Leaks	Leak at the mouth of the stem	<ol style="list-style-type: none"> 1. Fastening the gland bolts (14). 2. Replace the packing(12) 、 washer(10) 、 O-ring (18) 、 if leakage cannot stanch. 3. Disassemble it each time, need to replace the gland packing (12).
	Leak at end cover(5)	<ol style="list-style-type: none"> 1. Fastening the end cover bolts (17) ◦ 2. Replace the cover gasket(16) Or trunnion graphite washer(20) if leakage cannot stanch. 3. Disassemble it each time, need to replace the cover gasket (16).
	Leak at Extended bonnet(26)	<ol style="list-style-type: none"> 1. Fastening the bonnet bolts (28) ◦ 2. Replace the packing(12) 、 washer(10) 、 bonnet Gasket (27) ◦ 3. Disassemble it each time, need to replace the gland packing (12) 、 bonnet Gasket (27).

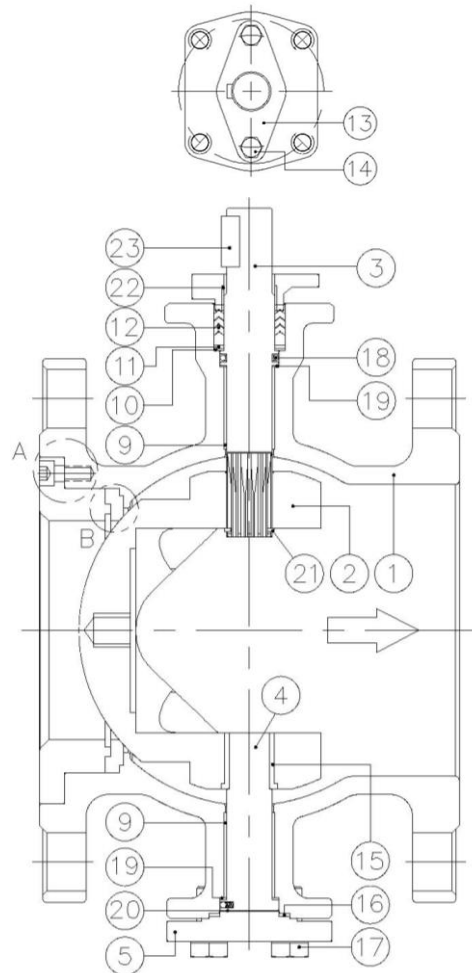


JDV CONTROL VALVES CO., LTD.

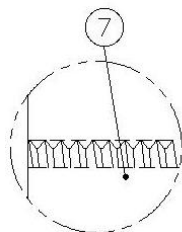
Technology For The Professionals.

JSB-F/ JSB-M Structure Diagram :

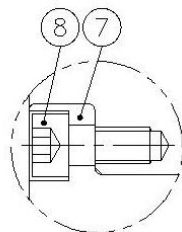
NO	PART
1	BODY
2	SEGMENT
3	STEM
4	SHAFT
5	END COVER
SOFT SEAT	6A SEAT
S01 METAL SEAT	6B SEAT SUPPORT
	6C SEAT
	6D PACKING
	6E SEAT GLAND
	6F SPRING
S02 METAL SEAT	6G SEAT
	6H O-RING
	6I SPRING
7	CAP
8	BOLT (1)
9	THURST BEARING
10	WASHER
11	WASHER
12	GLAND PACKING
13	GLAND
14	GLAND BOLT
15	SUPPORT (2)
16	COVER GASKET
17	COVER BOLT
18	STEM O-RING
19	WASHER
20	WASHER
21	C-CLIP
22	GLAND BEARING
23	PIN



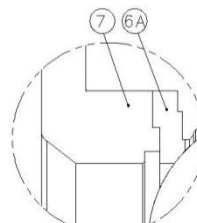
NOTES: (1)FOR SIZE 1-1/2" ABOVE
(2)FOR SIZE 2" ABOVE



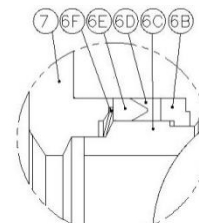
1"~1-1/2"
(Thread Type)
DETAIL-A



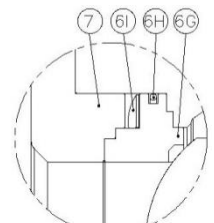
2"~16"
(Screw Type)
DETAIL-A



SOFT SEAT
DETAIL-B



V-S01
METAL SEAT
DETAIL-B



V-S02
METAL SEAT
DETAIL-B



NO.6-1, QINGNIAN ROAD, YANGMEI DISTRICT, TAOYUAN CITY 326 , TAIWAN

TEL: +886-3-4965066

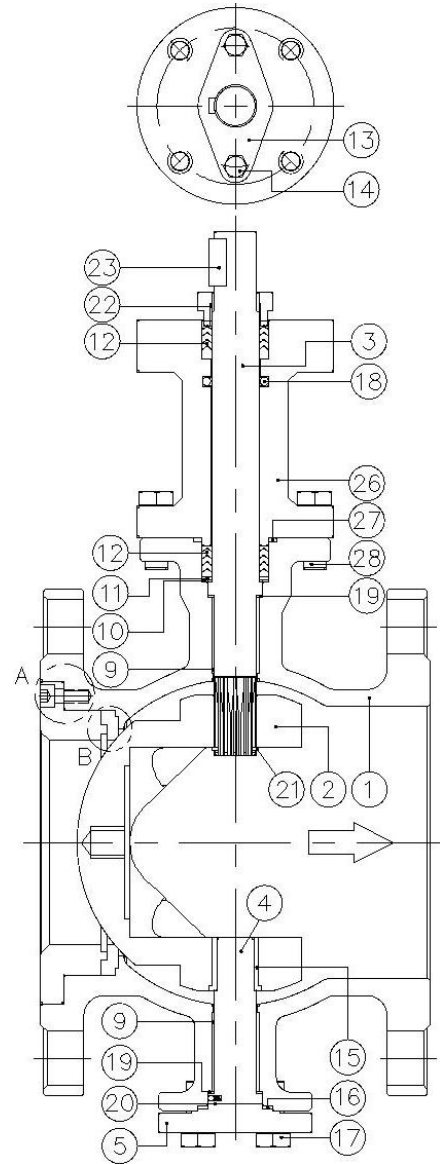
FAX: +886-3-4965300

HTTP://www.jdv.com.tw

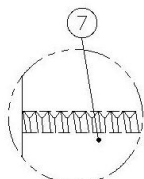


JSB-F/ JSB-M EXTENDED Structure Diagram

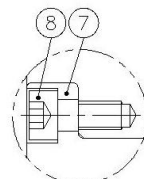
NO	PART
1	BODY
2	SEGMENT
3	STEM
4	SHAFT
5	END COVER
SOFT SEAT	6A SEAT
S01 METAL SEAT	6B SEAT SUPPORT
	6C SEAT
	6D PACKING
	6E SEAT GLAND
	6F SPRING
S02 METAL SEAT	6G SEAT
	6H O-RING
	6I SPRING
7	CAP
8	BOLT (1)
9	THURST BEARING
10	WASHER
11	WASHER
12	GLAND PACKING
13	GLAND
14	GLAND BOLT
15	SUPPORT (2)
16	COVER GASKET
17	COVER BOLT
18	STEM O-RING
19	WASHER
20	WASHER
21	C-CLIP
22	GLAND BEARING
23	PIN
26	BONNET
27	BONNET GASKET
28	BONNET BOLT



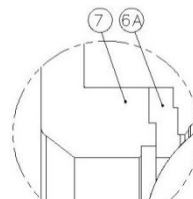
NOTES: (1)FOR SIZE 1-1/2" ABOVE
(2)FOR SIZE 2" ABOVE



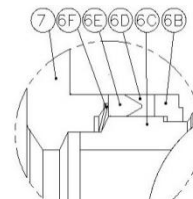
1"~1-1/2"
(Thread Type)
DETAIL-A



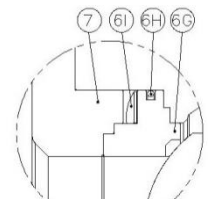
2"~16"
(Screw Type)
DETAIL-A



SOFT SEAT
DETAIL-B



V-S01
METAL SEAT
DETAIL-B





V-S02
METAL SEAT
DETAIL-B





Procedure of Disassembling and Assemblage

	<p>Warning:</p> <ol style="list-style-type: none">1. Prior to disassembling, the valve has to be at open position to guarantee full relief of pressure in ball chamber.2. All harmful substances have to be guaranteed to be cleaned completely.
	<p>Caution:</p> <ol style="list-style-type: none">1. Disassembling product has to be operated by qualified operators.2. Contact with JDV is recommended for maintaining and disassembling the product in order to avoid danger due to incorrect disassembling and assemblage.

Disassembly and Assembly notified:

1. When the valve is disassembled, the original seal may be adhered to the valve body (1) and parts. Before replacing the new seal, the sealing surface must be cleaned.
2. When the ball (2) is placed in the valve body (1), the valve stem (3) needs to be closed; otherwise it cannot be assembled and positioned.
3. Disassemble and assemble the valve. The key (23) is in the same direction as the ball surface (2) (figure 2, 3).



JSB-F / JSB-M Disassembling Procedure

* Rotate the ball (2) to the closed state.

1. Loosen the cover bolt (8) and remove the cover (7) from the body (1).

Note: under size 1-1/2", the design can be directly removed from the valve body (1) by loosening the cover (7).

1. seat removal:

* Soft seal: After the cover (7) is removed, the soft seat (6A) can be removed.

Metal seat:

S01-Metal seat set: Take out the spring (6F), seat gland (6E), metal seat (6C), packing (6D), seat support (6B).

S02-Metal seat Set: Remove the spring (6I), metal seat (6G), and O-ring (6H) in order.

* when remove the seats (6A), (6C), (6G), Please do not damage the sealing surface.

2. Remove the key (23), loosen the gland blot (14), and remove the gland (13).

3. Remove the c-clip (21) and remove the stem (3), washer (10), (11).

4. Loosen the end cover blot (17) and place the end cover (5), cover gasket (16), and the support shaft washer (20) is removed from the valve body (1).

5. Take out the support (4).

6. Remove the ball (2) from the downstream end. Do not damage the sealing surface.

JSB-F / JSB-M –EXTENDED Disassembling Procedure

1. Refer to JSB-F / JSB-M Product Structure Removal Steps 1~3.

Disassemble the cover and valve seat.

2. Use a clip to remove the retaining ring (21).

3. Loosen the extended bonnet blot (28).

4. Separate the extended bonnet (26) from the stem (3), gland packing (12), gasket, stem O-ring (18) and body (1). Remove the extended bonnet gasket (27). Take out the stem (3), washer(10) 、 (11).

5. Loosen the end cover screw (17) and place the end cover (5), end cover gasket (16) on the part in sequence.

6. Removed the washer (20) from the body (1).



JSB-F /JSB-M Assemblage Procedure

※ Put the ball (2) into the body (1) from the downstream end. Please assemble it carefully and do not damage the sealing surface.

1. Assemble the ball bushing (15) into the shaft hole at the bottom of the ball (2). Before inserting into the valve body (1).

* over the size 2" have the Ball bushing (15) part.

2. Put the shaft (4) use a plastic hammer from the bottom up into the bottom of the ball (2).

3. Put the stem O-ring (18) into the stem (3) groove hole, and then place the stem (3) from the top down into the ball (2) with the plastic hammer.

4. Assemble the end cover part – washer (20), end cover gasket (16), end cover (5) into the valve. Tighten the end cover bolt (17).

5. Assemble the stem assembly - place the washer (10) (11), gland packing (12) into the body(1) . put the gland (13) and tighten the packing gland bolt (14).

6. Seat assembly

Soft seat : Put the seat (6A) and cap(7) into the body (1). Tighten the cap. metal seat:

S01-Metal seat: Assemble seat support (6B), packing (6D), seat gland (6E), metal seat (6C), spring (6F), cap (7) ,tighten the cap bolt (8)in the Body (1).

S02-Metal seat: Place the O-ring (6H) on the metal seat (6G) groove and then put the spring (6I) into the body (1), put the cap (7) behind the body (1), tighten the cover bolt (8).

7. Place the key (23) on the valve stem.

8. Finally, use the c- clip tool, set the c-clip(21) in the groove of the stem (3).

9. Confirm that the operation is smooth and complete the assembly rocedure.



JDV CONTROL VALVES CO., LTD.

Technology For The Professionals.

JSB-F / JSB-M –EXTENDED Assemblage Procedure

1. Refer to JSB-F / JSB-M Product Structure Removal Steps 1~7.
2. Place the extended bonnet gasket (27) through the stem (3) and place the body (1) in connection with the extended bonnet (26).
3. Assemble the extended bonnet (26) through the stem (3) and tighten the bonnet bolt (28).
4. Assemble the gland packing (12). Place the gland (13) and tighten the packing gland blot (14).
5. Place the key (23) on the stem.
6. Confirm that the operation is smooth and complete the assembly procedure.



NO.6-1, QINGNIAN ROAD, YANGMEI DISTRICT, TAOYUAN CITY 326 , TAIWAN

TEL: +886-3-4965066

FAX: +886-3-4965300

HTTP://www.jdv.com.tw



JDV CONTROL VALVES CO., LTD.

Technology For The Professionals.

進典工業股份有限公司

JDV CONTROL VALVES CO., LTD.

V型半球控制閥 安裝、操作和維護手冊

版本:V 1.1

發行日期:2018/02/26



NO.6-1, QINGNIAN ROAD, YANGMEI DISTRICT, TAoyUAN CITY 326 , TAIWAN

TEL: +886-3-4965066

FAX: +886-3-4965300

HTTP://www.jdv.com.tw



JDV CONTROL VALVES CO., LTD.

Technology For The Professionals.

JSB-F/JSB-M

V 型半球閥

安裝操作維修手冊

目錄

概述.....	3
使用前須知	4
產品運送 / 保存 / 維護須知	5
保存及維護	6
保存未包裝/已拆裝球閥	6
安裝準備須知：	7
操作前須知：	8
日常維護與問題排除：	10
JSB-F/ JSB-M 結構圖	11
JSB-F/ JSB-M EXTENDED 結構圖	12
卸與組裝程序：	13
JSB-F / JSB-M 拆卸程序.....	13
JSB-F / JSB-M -EXTENDED 拆卸程序.....	14
JSB-F /JSB-M 組裝程序.....	14
JSB-F /JSB-M 組裝程序.....	15



NO.6-1, QINGNIAN ROAD, YANGMEI DISTRICT, TAOYUAN CITY 326 , TAIWAN

TEL: +886-3-4965066

FAX: +886-3-4965300

HTTP://www.jdv.com.tw



概述

JSB 系列為進典公司-V 型半球閥

產品特點包含:

1. **閥體 ONE PIECE 設計**：設計上，減低洩漏發生機會。
2. **適用各種艱難工況**：含纖維或固體顆粒流體介質，提供順暢且不間斷運作，並給予穩定且較高 Cv 值。
3. **固定軸設計**：固定式設計，讓操作扭矩輕，提高生命週期。
4. **V 型切口**：能運行無阻通過纖維或高黏度的泥漿流體介質，提供良好剪切與刮除功能。
5. **設計選擇**：滿足多種工況運用，提供多種的閥座材質選擇。
6. **選擇性高**：符合各種需求，提供多種閥座處理方式，有不同選擇可替換。
7. **運作順暢**：金屬閥座有彈簧載設計，能達到較低扭矩。
8. **維修容易**：側蓋可快速拆卸，簡化更換內部零件步驟，進而易於維修。
9. **流量特性**：流量控制為等百分比。
10. **控制性能**：齒槽式中軸設計。目的優化控制，降低進入死區發生。
11. **連接型式**：夾式或法蘭式。
12. **安裝平台**：符合 ISO 5211 規範。
13. **防閥桿飛出裝置**：防閥桿飛出設計，在閥桿裝防飛出扣件，當閥體內部有壓力，因受扣件阻擋於閥體內所以不會飛出，導致工安事件發生。
14. **防靜電裝置**：球因流體流動摩擦產生靜電，無法將靜電傳導至閥體外部。
由防靜電裝置設計，可將靜電導至閥體外部，避免因靜電產生火花，而導致爆炸、火災工安事件發生。







使用前須知

1. 操作產品前請仔細閱讀安裝操作維修手冊。
2. 請確認此份文件所提及之警告標誌及說明。
3. 請將安裝操作維修手冊放置於隨手可取之場所，便利查詢使用。


警告標語:


標示		
說明	危險的情況，如果不能避免，可能導致輕微或中度損傷。	如果不避免，潛在的危險情況，可能導致死亡或嚴重傷害。

安全告知:

由設計工程師或產品使用之負責人員做基礎的產品規格確認，並檢查閥門和安裝設備之符合性，已確保使用的安全。

在安裝閥門前，須確認檢查操作條件（溫度、壓力、流體特性、環境條件、安裝儀錶、等等）是否符合閥門設定的使用工況。


	警告： 請不要超出閥門規格或技術參數表所示之之限值。 如果不避免，可能導致死亡或嚴重傷害。
---	---


	警告： 閥門可用於室內或室外。如在暴露大氣環境中使用，應注意閥門之腐蝕。如果不能避免，可能導致輕微或中度損傷。
---	--






產品運送 / 保存 / 維護須知

	<p>注意: 閥門可用於室內或室外。如在暴露大氣環境中使用,因注意閥門之腐蝕及如果不能避免,可能導致輕微或中度損傷。</p>
---	---

	<p>警告: 請不要超出閥門規格或技術參數表所示之之限值。如果不避免,可能導致死亡或嚴重傷害。</p>
---	--

	<p>警告:</p> <ol style="list-style-type: none">1. 移動或搬運時,正確的設備和配件(吊索、緊固物、掛鉤等等)必須按尺寸選擇合適的工具,要考慮包裝明細的個別重量和全部的總重量。2. 吊升和處理球閥,必須由符合操作資格的人操作。不適當的吊升會造成閥的變形或掉落而使閥損毀。3. 不要使用氣缸上設置之吊點或托架吊升閥,以免發生危險。4. 請勿將手動閥之把手做為拿取或吊升球閥用,會使手動閥之把手折斷或與閥斷開分離,可能導致毀壞或人員傷害。
---	--

※ 產品應適當包裝好,以避免運送和存放於倉庫造成不必要損壞,尤其請特別注意下列預防措施:

1. 閥門兩側端面與流道口處必須使用適當的密封蓋保護好,確保運送過程中可防止異物進入閥腔內,避免閥腔內不清潔及端面因碰撞而產生受損。
2. 包裝的型態必須確保能安全運送到存放地點,抵達存放地點時請確認包覆材料或包裝紙或木箱是否保持完整並無損壞狀態。





JDV CONTROL VALVES CO., LTD.

Technology For The Professionals.

保存及維護

保存已包裝之球閥

1. 將包裝加以適當保護,以避免包裝之損壞。
2. 對於包裝應要有警語標示,已確保產品移動時造成不必要之損壞.如:吊掛重心。
3. 為避免法蘭凸緣表面受損,必須使用適當的密封貼片或封蓋保護凸緣表面與流道口。
閥體材質若為易鏽件須於法蘭表面與流道口塗上防鏽油,實施防護避免鏽斑產生。
5. 存放場所需保持乾淨及乾燥。
6. 請不要將產品暴露於風/雨中或直接日晒。
7. 如果產品存放一段時間,請定期檢查產品保存狀況。

保存未包裝/已拆裝球閥

1. 處理已拆裝球閥,確保產品做適當保護,以避免產品之損壞。
2. 當處理大尺寸閥門時,應把產品安全穩固的固定好,使用適當的工具(托架、掛鉤、緊固物、繩索)搬運,移動時要保持平衡以避免搬運的過程中掉落或晃動,造成產品損壞。



NO.6-1, QINGNIAN ROAD, YANGMEI DISTRICT, TAoyUAN CITY 326 , TAIWAN

TEL: +886-3-4965066

FAX: +886-3-4965300

HTTP://www.jdv.com.tw



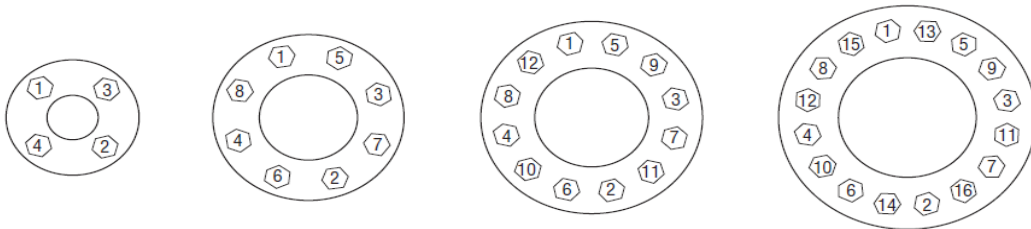
JDV CONTROL VALVES CO., LTD.

Technology For The Professionals.

安裝準備須知：

請依照遵守以下的操作指南，以確保及延長產品壽命。

1. 請小心拆卸包裝(木箱或棧板..)，避免造成產品及氣缸或其他零配件的損壞。
2. 安裝前，將法蘭口的密封件移除，使用含有空氣過濾器之空氣管線清理球閥的內部。確保無異物在內。
3. 確認銘板上的標示適用於使用工況。
4. 請確認閥體上的流向符合設備壓力的方向。
5. 確認閥門所有螺絲及螺帽於鎖緊狀態。
6. 安裝閥門，請使用扳手並遵循對角順序(圖一)鎖附螺絲，以避免法蘭變形。



(圖一)



NO.6-1, QINGNIAN ROAD, YANGMEI DISTRICT, TAOYUAN CITY 326 , TAIWAN

TEL: +886-3-4965066

FAX: +886-3-4965300

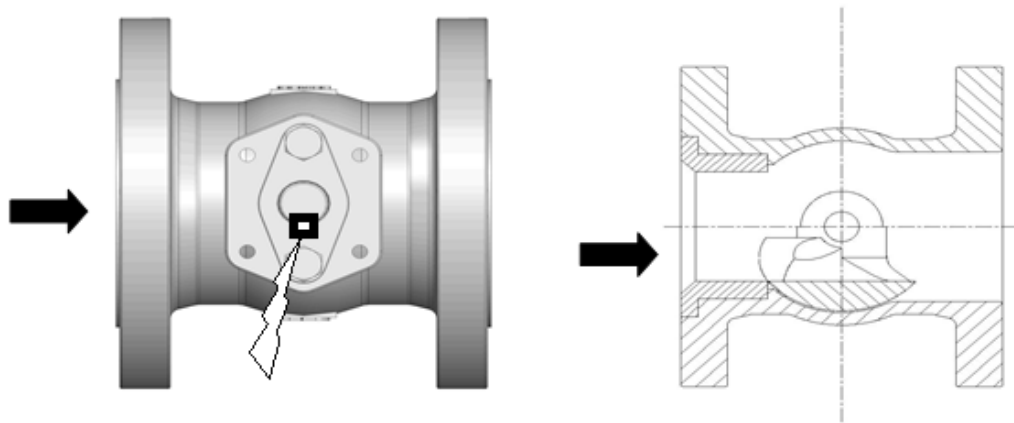
HTTP://www.jdv.com.tw



操作前須知：

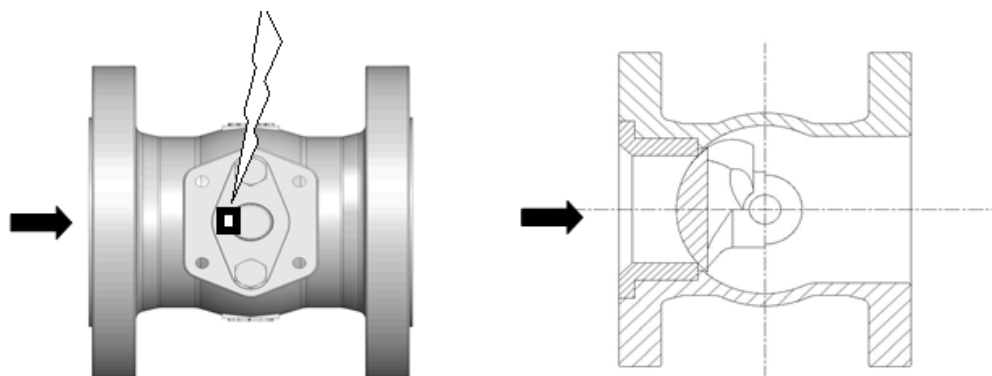
閥門開關狀態

1. 當手動操作時，過度及不適當操作會造成閥門零組件損壞或間接造成洩漏發生。
2. 請確認閥門開啟（圖二）或閥門關閉（圖三）位置如圖所示。



閥門開啟狀態
鍵銷方向與球面一致

(圖二)



閥門關閉狀態
鍵銷方向與球面一致

(圖三)



JDV CONTROL VALVES CO., LTD.

Technology For The Professionals.

氣動閥門

1. 氣缸或驅動器執行閥門開啟／關閉，請按照氣缸或驅動器製造商說明書指示操作。
2. 當過度及不適當操作時，會造成氣缸或驅動器及閥門零組件損壞或間接造成洩漏發生。
2. 請確認氣缸或驅動器上指示在開啟位置，閥門須處於開啟狀態，指示在關閉位置，閥門須處於關閉狀態。



警告：

閥門手動、齒輪箱、氣動操作，作動範圍不可以超過 90 度以上。會影響閥座或其他零組件鬆脫，直接造成洩漏或損壞狀況。



NO.6-1, QINGNIAN ROAD, YANGMEI DISTRICT, TAoyUAN CITY 326 , TAIWAN

TEL: +886-3-4965066

FAX: +886-3-4965300

HTTP://www.jdv.com.tw



日常維護與問題排除：

日常維護

※ 維持例行性維護及檢查，以確保良好操作性。

壓蓋填料維護

上密封(閥桿)有洩漏的現象,請均勻地鎖緊壓蓋螺絲直至止洩為止。

故障排除

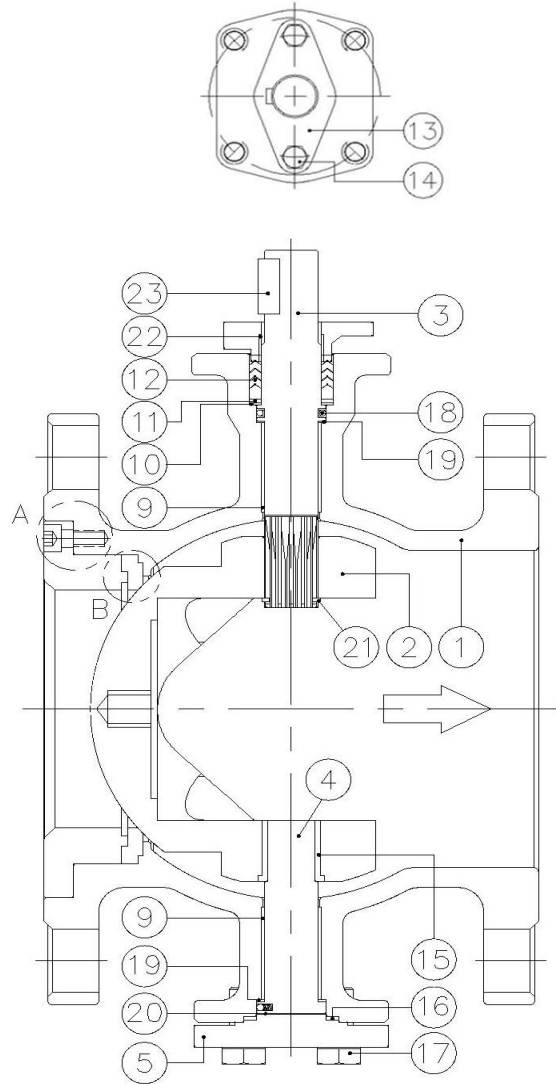
區域	問題描述	解決方案
內漏	SEAT(6A)(6C)(6G)洩漏	<ol style="list-style-type: none"> 1. 請確認閥球(2)及軟密封閥座(6A)、金屬閥座(6C)(6G)密封面是否有損傷或刮痕。 2. 無損傷或刮痕,請更換填料(6D)(6H)。 3. 有損傷或刮痕,閥球(2)或軟密封閥座(6A)、金屬閥座(6C)(6G)請更換受損零件。 4. 每次拆卸時,有必要更換密封填料(6D)。
外漏	閥桿處洩漏	<ol style="list-style-type: none"> 1. 鎖緊填料壓蓋螺絲(14)。 2. 如無法止漏,請更換填料(12)(10)(18)。 3. 每次拆卸時,有必要更換閥桿填料(12)。
	底部封蓋(5)洩漏	<ol style="list-style-type: none"> 1. 鎖緊底部封蓋螺絲(17)。 2. 如無法止漏,請更換底部封蓋密封墊片(16)或支撐軸潤滑墊片(20)材質為石墨材請更換。 3. 每次拆卸時,有必要更換密封件(16)。
	加長閥桿軸套(26)洩漏	<ol style="list-style-type: none"> 1. 鎖緊加長閥桿軸套螺絲(28)。 2. 如無法止漏,請更換密封件(27)(12)(10)。 3. 每次拆卸時,有必要更換密封件(27)(12)。



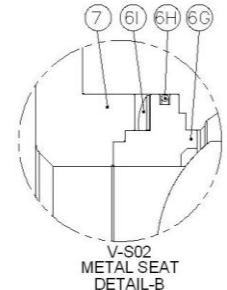
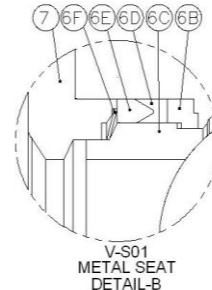
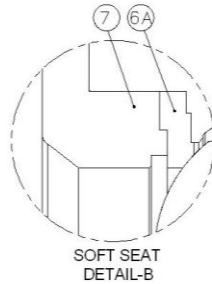
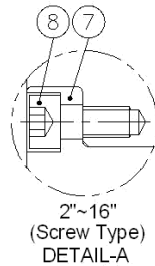
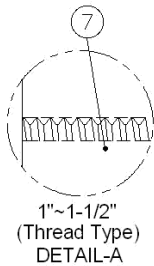


JSB-F/ JSB-M 結構圖：

編號	配件
1	閥體
2	閥球
3	閥桿
4	支撐軸
5	底部封蓋
軟密封	6A 軟密封閥座
S01 金屬閥座組	6B 閥座壓環
	6C 金屬閥座
	6D 閥座密封件
	6E 閥座密封壓環
	6F 波形彈簧
S02 金屬閥座組	6G 金屬閥座
	6H O型環
	6I 波形彈簧
7	側蓋
8	側蓋螺絲 (1)
9	襯套
10	墊片
11	潤滑墊片
12	閥桿填料
13	填料壓蓋
14	填料壓蓋螺絲
15	閥球軸襯(2)
16	底部封蓋密封墊片
17	底部封蓋螺絲
18	閥桿 O 型環
19	閥桿潤滑墊片
20	支撐軸潤滑墊片
21	扣環
22	填料壓蓋軸襯
23	鍵銷



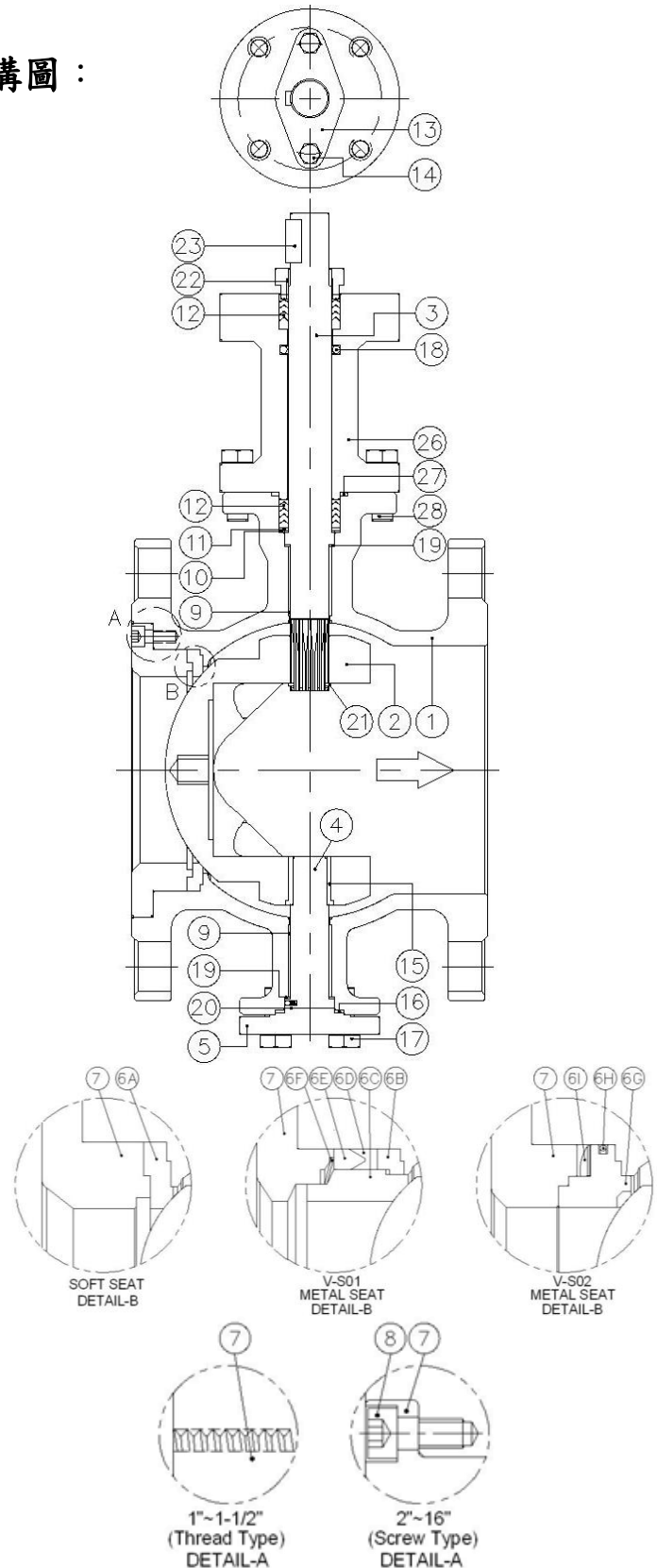
註：(1) 1-1/2"(含)以下無此零件
 (2) 2"(含)以下無此零件





JSB-F/ JSB-M EXTENDED 結構圖：

編號	配件
1	閥體
2	閥球
3	閥桿
4	支撐軸
5	底部封蓋
軟密封	6A 軟密封閥座
S01 金屬閥座組	6B 閥座壓環
	6C 金屬閥座
	6D 閥座密封件
	6E 閥座密封壓環
	6F 波形彈簧
S02 金屬閥座組	6G 金屬閥座
	6H O型環
	6I 波形彈簧
7	側蓋
8	側蓋螺絲 (1)
9	襯套
10	墊片
11	潤滑墊片
12	閥桿填料
13	填料壓蓋
14	填料壓蓋螺絲
15	閥球軸襯(2)
16	底部封蓋密封墊片
17	底部封蓋螺絲
18	閥桿 O 型環
19	閥桿潤滑墊片
20	支撐軸潤滑墊片
21	扣環
22	填料壓蓋軸襯
23	鍵銷
26	加長閥桿軸套
27	加長閥桿軸套密封墊片
28	加長閥桿軸套螺絲





註：(1) 1-1/2"(含)以下無此零件
 (2) 2"(含)以下無此零件





卸與組裝程序：

	<p>警告：</p> <ol style="list-style-type: none">1. 拆卸前，閥門必須在半開狀態，以確保閥腔壓力已完全性洩放。2. 拆卸前，須一定要確保閥腔內，任何有害危險物質已清除乾淨。3. 拆卸時，處於安全溫度範圍內，保護人員操作執行上的安全。
	<p>警告：</p> <ol style="list-style-type: none">1. 拆卸、維修、組裝，必須由符合操作資格合格人員執行。2. 拆卸、維修、組裝，避免不正確操作，發生危險。建議聯繫本公司。

拆卸與組裝注意事項

1. 拆開閥門時，原有的密封迫緊會可能黏附於閥體(1)或相鄰的零件上。再更換新的密封件前，必須將密封面清理乾淨。
2. 閥球(2)放入閥體(1)時，閥桿(3)需於關閉狀態，否則無法組裝定位。
3. 要小心操作拆卸與組裝閥門，鍵銷(23)與閥球面(2)方向一致(圖二、三)。

JSB-F / JSB-M 拆卸程序

1. 將閥球(2)旋轉至關閉狀態。
2. 鬆開側蓋螺絲(8)，將側蓋(7)從閥體(1)取出。
註：1-1/2"(含)以下，設計直接鬆開側蓋(7)便可從閥體(1)取出。
3. 閥座拆卸：
軟密封:將側蓋(7)拆卸後，便可取出軟密封閥座(6A)。
金屬硬密封:
S01-金屬閥座組:依序取出彈簧(6F)、閥座密封壓環(6E)、金屬閥座(6C)、閥座密封件(6D)、閥座壓環(6B)。
S02-金屬閥座組:依序取出彈簧(6I)、金屬閥座(6G)、O型環(6H)。

* 請小心取出閥座(6A)、(6C)、(6G)誤碰撞並傷害密封面。
4. 先取下鍵銷(23)，鬆開填料壓蓋螺絲(14)，拆卸填料壓蓋(13)。
5. 使用夾子移除扣環(21)，將閥桿(3)、墊片(10)、潤滑墊片(11)取出。
6. 鬆開底部封蓋螺絲(17)，依序將零件底部封蓋(5)、底部封蓋墊片(16)、支撐軸潤滑墊片(20)從閥體(1)取出。
7. 取出支撐軸(4)。
8. 最後將閥球(2)由下游端取出，請小心拆卸誤碰撞並傷害密封面。





JSB-F / JSB-M –EXTENDED 拆卸程序

1. 參照 JSB-F / JSB-M 產品結構拆卸 步驟 1~3，拆卸側蓋及閥座等配件。
2. 取下鍵銷(23)，鬆開填料壓蓋螺絲(14)，拆卸填料壓蓋(13)。
3. 使用夾子移除扣環(21)。
4. 鬆開加長閥桿軸套螺絲(28)。
5. 將加長閥桿軸套(26)與閥桿(3)、閥桿填料(12)、墊片、閥桿 O 型環(18)與閥體(1)脫離。再移除加長閥桿軸套密封墊片(27)。將閥桿(3)、墊片(10)、潤滑墊片(11)取出。
6. 鬆開底部封蓋螺絲(17)，依序將零件底部封蓋(5)、底部封蓋墊片(16)、
7. 支撐軸潤滑墊片(20)從閥體(1)取出。

JSB-F / JSB-M 組裝程序

1. 先將閥球(2)由下游端放入閥體(1)，請小心組裝，誤碰撞並傷害密封面。
2. 放入於閥體(1)前，要先將閥球軸襯(15)組裝於閥球(2)底部軸孔中。
* 閥球軸襯(15)，2"(含)以下無此零件。
3. 用塑膠槌輕敲支撐軸(4)，由下往上將支撐軸(4)放入閥球(2)底部軸孔中。
4. 用塑膠槌輕敲閥桿(3)，由上往下將閥桿(3)放入閥球(2)頂部齒槽孔中。
放入於閥球(2)前，要先將閥桿 O 型環(18)放至閥桿(3)溝槽孔中。
5. 組裝底部封蓋部件-潤滑墊片(20)、底部封蓋墊片(16)、底部封蓋(5)放入於閥體(1)後，鎖緊底部封蓋螺絲(17)。
6. 組裝閥桿部件-依序將墊片(10)、潤滑墊片(11)、閥桿填料(12)放入於閥體後。將填料壓蓋(13)放上，鎖緊填料壓蓋螺絲 (14)。
7. 閥座組裝
 - 軟密封:將閥座 (6A)、側蓋 (7) 放入閥體 (1) 後。鎖緊側蓋螺絲 (8)。
 - 金屬硬密封:
 - S01-金屬閥座組:依序組裝閥座壓環(6B)、閥座密封件(6D)、閥座密封壓環(6E)、金屬閥座(6C)、彈簧(6F)、側蓋(7)放入閥體(1)後，鎖緊側蓋螺絲(8)。
 - S02-金屬閥座組:依序將 O 型環(6H)放置於金屬閥座(6G)溝槽，波型彈簧(6I)、側蓋(7)放入閥體(1)後。鎖緊側蓋螺絲(8)。
8. 將鍵銷(23)放製閥桿上。
9. 最後將扣環(21)使用扣環工具放入閥桿 (3) 溝槽孔中。
10. 確認運轉是否順暢，即完成組裝程序。





JDV CONTROL VALVES CO., LTD.

Technology For The Professionals.

JSB-F /JSB-M 組裝程序

1. 參照 JSB-F /JSB-M 組裝程序，步驟 1~7
2. 將加長閥桿軸套密封墊片(27)穿過閥桿(3)放置閥體(1)與加長閥桿軸套(26)連接處。
3. 組裝加長閥桿軸套(26)，穿過閥桿(3)，鎖附加長閥桿軸套螺絲(28)。
4. 組裝閥桿填料(12)。將填料壓蓋(13)放上，鎖緊填料壓蓋螺絲(14)。
5. 將鍵銷(23)放製閥桿上。
6. 確認運轉是否順暢，即完成組裝程序。



NO.6-1, QINGNIAN ROAD, YANGMEI DISTRICT, TAoyUAN CITY 326 , TAIWAN

TEL: +886-3-4965066

FAX: +886-3-4965300

HTTP://www.jdv.com.tw