

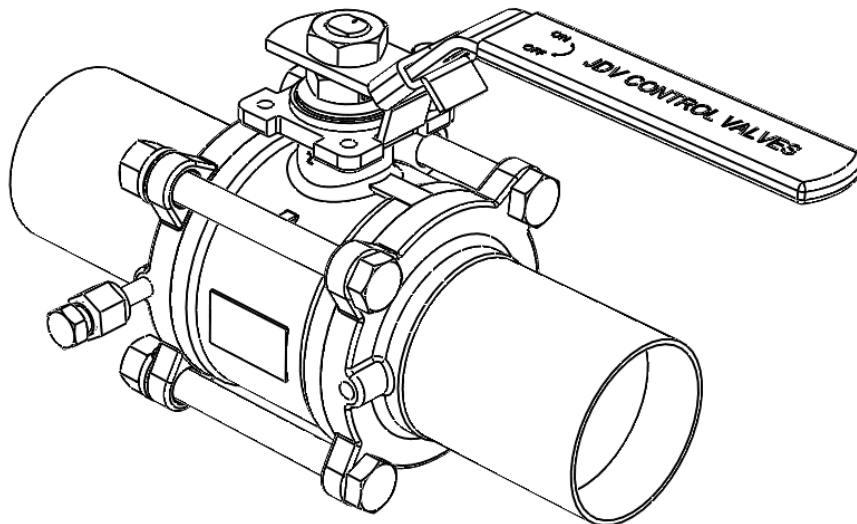


**JDV
CONTROL
VALVES**

JDV CONTROL VALVES CO.,LTD.

Installation, Operation and Maintenance

**JBF-E(DN15~DN100)
3-PC Floating Type
Soft Seat Ball Valve**



**VERSION: V 2.0
ISSUED DATE: 2024/01**



Product Manual



**JDV
CONTROL
VALVES**

**JBF-E (DN15~DN100)
3-PC Floating Type Soft Seat Ball Valve
Instructions for Installation, Operation and Maintenance**

Contents

1. Precautions before use	3
1.1 SECURITY NOTICE	3
1.2 PRECAUTIONS FOR DISASSEMBLY PROCEDURES.....	3
2. Product Transportation/Storage/ Maintenance Instructions	4
2.1 Preservation and Maintenance.....	4
2.1.1 Save the packaged ball valve	4
2.1.2 Keep the unpacked/ disassembled ball valve	4
3. Instructions for installation preparation	5
3.1 VALVE INFORMATION.....	5
4. The product description JBF-E	6
4.1 EXPLODED VIEW	6
4.2 Parts list.....	6
4.3 List of materials for repairs	6
5. Preparation before installation	7
5.1 DISASSEMBLY/REPAIR	7
5.2 ASSEMBLE	8
6. Product Maintenance	9
7. Troubleshooting	9



1. Precautions before use

- (1) Please read the installation, operation and maintenance manual carefully before operating the product to avoid damage caused by improper use.
- (2) Please confirm the warning signs and descriptions mentioned in this document.
- (3) Please place the installation operation and maintenance manual in a convenient place for easy inquiry and use.

Warning slogans

Marked	Illustrate
	Dangerous situations can lead to minor or moderate injuries if not avoided.
	If not avoided, potentially dangerous situations can result in death or serious injury.

1.1 Security Notice

The design engineer or the person in charge of the use of the product will confirm the basic product specifications, and check the compliance of the valve and installation equipment to ensure the safety of use.

Before installing the valve, it is necessary to confirm and check whether the operating conditions, including the operating temperature range, maximum working pressure, fluid characteristics, environmental conditions, installation instruments, etc., meet the operating conditions set by the valve.

	<p>warn:</p> <p>Do not exceed the limits shown in the valve specifications or data sheet, as failure to avoid this may result in death or serious injury.</p>
	<p>note:</p> <ol style="list-style-type: none"> 1. The valve can be used indoors or outdoors. If used in an exposed atmosphere, attention should be paid to the corrosion and unavoidable conditions of the valve, which may lead to minor or moderate damage. 2. After the valve is used by a higher shut-off pressure, the sealing effect will be reduced at a lower shut-off pressure.

1.2 Precautions for disassembly procedures

	<p>warn:</p> <ol style="list-style-type: none"> 1. Before disassembly, the valve must be in the semi-open position to ensure that the pressure in the ball cavity is completely released. 2. All hazardous substances must be guaranteed to be removed.
	<p>note:</p> <ol style="list-style-type: none"> 1. The dismantling product must be operated by a qualified operator. 2. It is recommended to contact JDV for product maintenance and disassembly to avoid danger caused by improper disassembly and assembly.



JDV CONTROL VALVES

2 · Product Transportation/Storage/ Maintenance Instructions

	<p>warn</p> <ol style="list-style-type: none">1. When moving or handling, it is necessary to select the appropriate tools according to the size, use the equipment and accessories (such as slings, fasteners, hooks, etc.) correctly, and consider the individual weight of the packaging details and the total weight of the whole.2. When lifting and handling ball valves, the operator must obtain the operation qualification. Improper lifting will cause the valve body to deform or fall and cause the valve to be damaged.3. Do not use the lifting point or bracket lifting valve set on the cylinder to avoid danger.4. Do not use the handle of the manual valve as a way to lift or lift the ball valve, as the handle of the manual valve will be damaged or disconnected from the valve body, which may lead to destruction or personal injury.
--	---

※ The product should be properly packed to avoid unnecessary damage caused by transportation and storage in the warehouse, especially the following precautions: :

Transport

1. Both ends of the ball valve must be properly protected with appropriate sealing caps, and the ball valve must be vacuum-packed separately in a clean room to ensure that the inside and outside of the valve are clean and prevent foreign objects from entering.
2. The type of packing must be such that it can be safely transported to the storage location, please confirm that the vacuum packaging is not invalid and that the carton or wooden box is in good condition.

2.1 Preservation and Maintenance

2.1.1 Save the packaged ball valve

1. Properly protect the packaging to avoid damage to the packaging.
2. There should be warning signs for the packaging to ensure unnecessary damage caused by the product movement. Such as: hanging the center of gravity.
3. In order to avoid damage to the connecting end, it must be protected by a sealing cap to ensure that the inside of the valve is clean and prevent foreign objects from entering.
4. Please keep the valve fully open when storing, partially open may deform the ball pad.
5. Keep the storage area clean and dry.
6. Please do not expose the product to wind/rain or direct sunlight.
7. If the product has been stored for a period of time, check the storage condition of the product regularly.

2.1.2 Keep the unpacked/ disassembled ball valve

1. Unpacked/disassembled clean valves must be cleaned without oil and dust, protected with a sealed cap, and vacuum-packed before they can be stored.
2. For packaged valves, please follow the first item "Save Packaged Valves" for preservation.



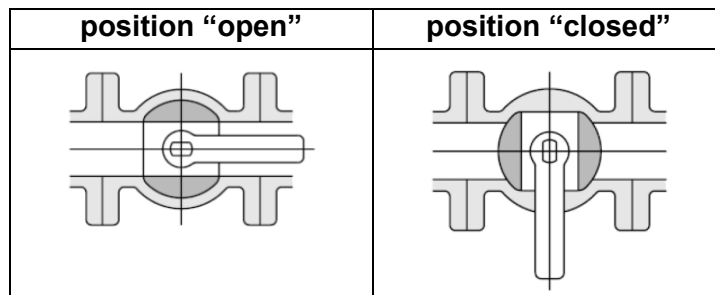
JDV CONTROL VALVES

3 · Instructions for installation preparation

Manual valve (handle operated)

1. When operating manually, excessive or improper handling can damage the positioning rod or other components, resulting in indirect leakage.
2. Operate the valve according to the instructions of the handle, and rotate it counterclockwise to open or rotate clockwise to close.

* Ball valve operating position: Please confirm that the plane direction of the top of the ball valve stem is parallel to the handle and pipe, and the ball valve is in the open position.



note:

Failure to properly position the handle on the locating lever can cause the valve to be under- or over-stroke, resulting in potential leaks that will affect the valve warranty.

3.1 Valve information

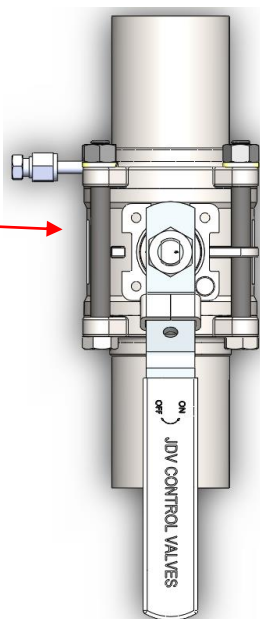
Valve information is located on both sides of the valve body and on the valve nameplate

DN50
PN64
1.4408

JDV
316L/PTFE
50A-5S
0.98 MPa
80°C Max

Left-hand valve message content

1. Valve size
2. Valve pressure class
3. Body material



Right valve message content

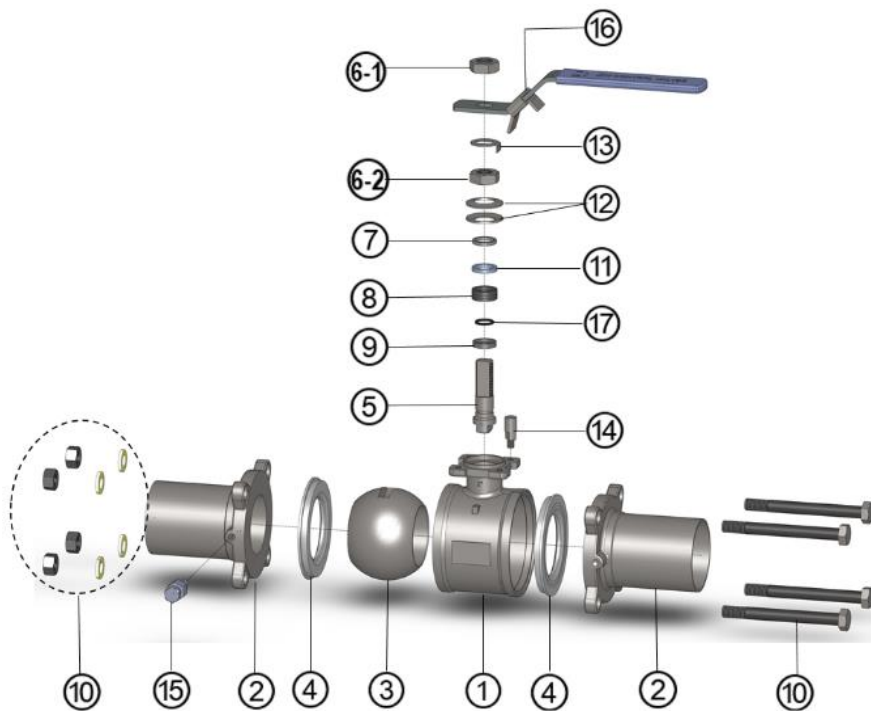
1. Brand name
2. Cover / Ball mat material
3. Model
4. Maximum working pressure
5. Maximum operating temperature



JDV CONTROL VALVES

4 · The product description JBF-E

4.1 Exploded view



4.2 Parts list

Item number	Part name
1	BODY
2	CAP
3	BALL
★4	SEAT
5	STEM
6	GLAND UNT
7	STEM WASHER
★8	GLAND PACKING
★9	THRUST WASHER
10	BOLT
	NUT
	WASHER
11	BEARING
12	SPRING
13	WASHER
14	POSITIONING PIN
15(Optional)	PURGE PORT SET
16	HANDLE SET (Lock, rubber sleeve)
★17	O-Ring

Note: Parts marked " ★ " are recommended for replacement when repaired

4.3 List of materials for repairs

Item number	Part name	Quantity
4	SEAT	2pcs
8	GLAND PACKING	1set
9	THRUST WASHER	1 pcs
17	O-Ring	1pcs



JDV CONTROL VALVES

5 · Preparation before installation

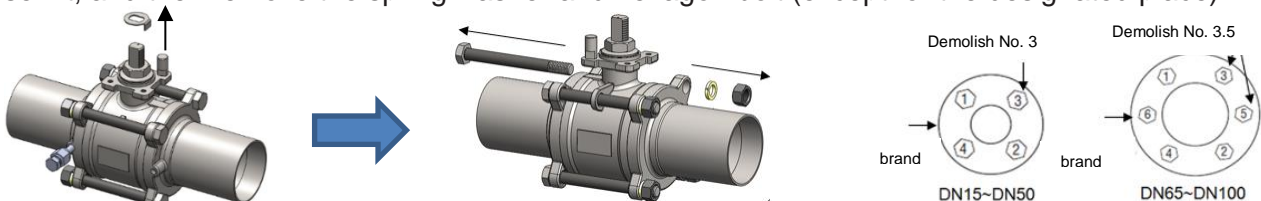
5.1 Valve connection pre-inspection

- (1) All procedures shown in this IOM are for butt ends.
- (2) Remove the blue plastic protective cover that was installed at the end of the valve at the factory.
- (3) While looking at the hole, open and close the valve, confirming that the ball position matches the lever position or actuator indicator.
- (4) When installed, the valve must be in the open position to protect the surface of the ball from damage.

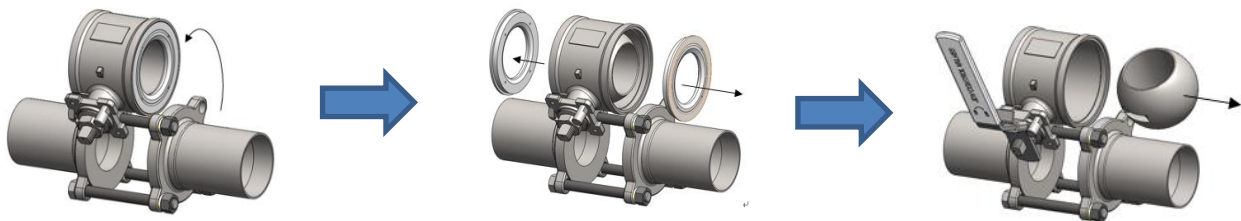
5.2 Disassembly/Repair

★Note: Please refer to the precautions for disassembly procedures before execution, and avoid damage to materials and parts during the execution process.

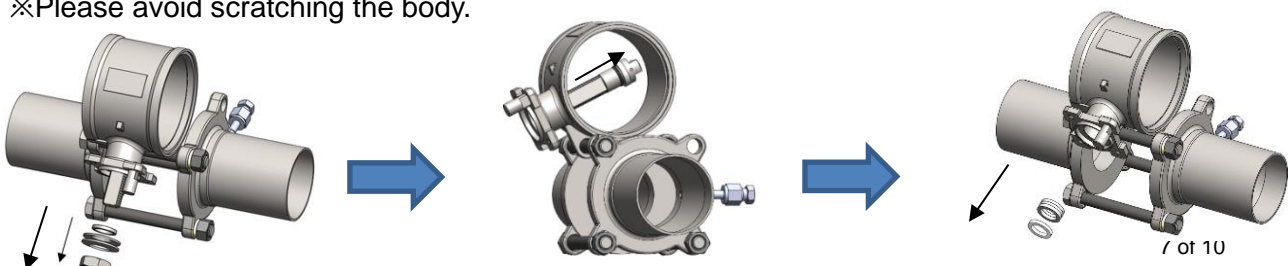
- (1) Turn the valve to full open
- (2) Refer to the JBF-E explosion view, hold the handle with your hand to fix the switch angle, use an appropriate opening wrench to loosen the thin nut (6-1) by counterclockwise rotation and remove the thin nut (6-1) and handle set (16), and then remove the anti-loosening gasket (13).
- (3) Attach the handle set to the mandrel (no lock nut required), hold the handle set with your hand to fix the switch angle, and use an appropriate open wrench to loosen the thin nut (6-2) by turning it counterclockwise without removing it. * Do not use tools other than handles to fix the angle of the switch
- (4) Please refer to the joint surface nut (10) specified in the figure below, turn it counterclockwise and loosen it, and then remove the spring washer and hexagon bolt (except for the designated place).



- (5) If the icon direction unscrews the body (1) out, and takes out the ball pad (4), and the handle group (16) is installed on the mandrel (no lock nut is required), and the valve is turned to close by operating the handle and the solid ball (3) is taken out. *Please be careful when operating the handle, the ball will roll out.

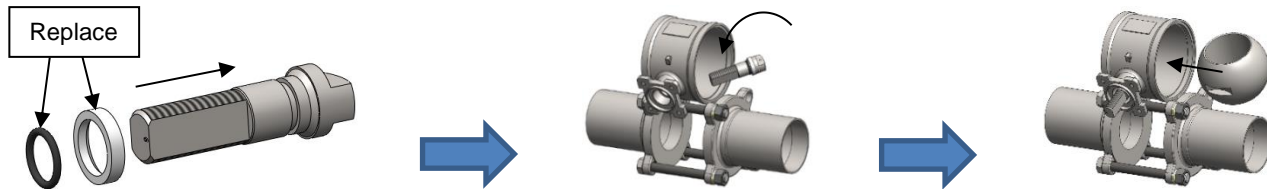


- (6) The thin nut (6-2) is removed, the disc spring (12) and the mandrel sealing ring (7) are removed sequentially, and then the flat mandrel (5) and the small sheet (9)/O-Ring (17) are pushed into the inside of the body, and the flow channel of the body is taken out.
- (7) Use appropriate tools to carefully remove the mandrel bushing (11) and V-shaped mid-mouth (8).
※Please avoid scratching the body.

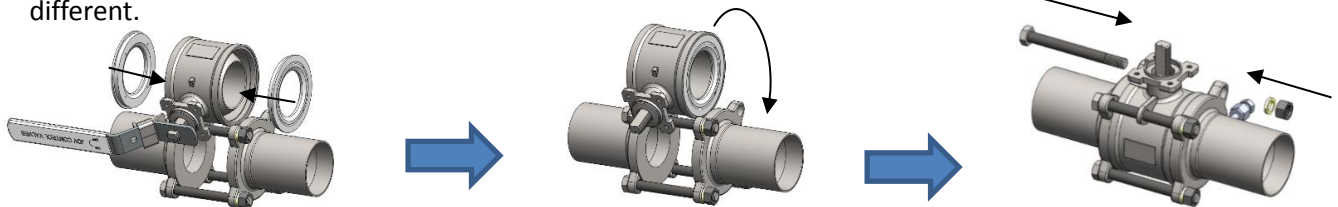


5.3 Assembly work

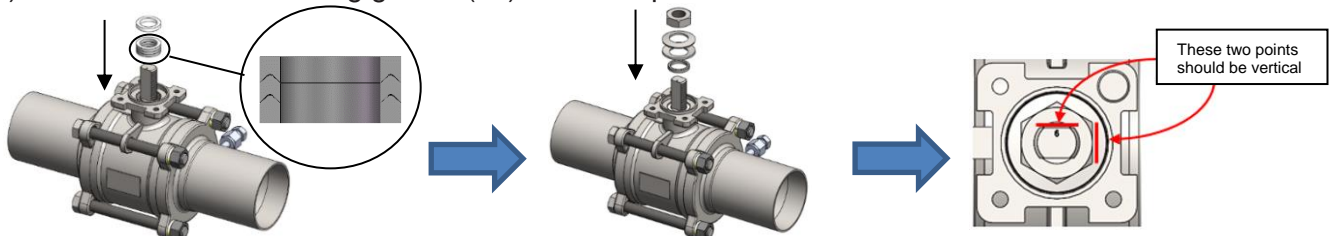
- (1) Clean or replace the flat mandrel (5), and then insert the replaced small sheet (9) and O-Ring (17) into the flat mandrel (5) and install them back into the body. ※Please avoid the mandrel hitting the body.
- (2) The handle group (16) is installed on the mandrel (no lock nut is required), and the handle group is operated to turn the valve closed and the solid ball (3) is assembled).



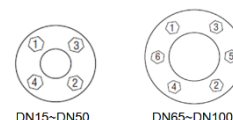
- (3) After completion, the handle group (16) is operated to turn the valve open, and the new ball pad (4) is grouped °
- (4) Screw the body in, make the body (1) coaxial with the pipe mouth of the cover (2), and pass the joint surface nut (10) through the bolt holes of the two end covers, install the spring washer according to the direction of the icon arrow, and then lock the nut clockwise, please note that the nut should not be torsionally locked at this stage, and ensure that the outer diameter of the body and the outer diameter of the cover are not significantly different.



- (5) After the new V-shaped mid-mouth (8) is loaded into the body, the mandrel bushing (11) is loaded into the body. *Please note that the V-mount is facing downward, and then insert the mandrel seal (7), disc spring (12), and thin nut (6-2) in sequence.
- (6) Install the handle set on the mandrel (no lock nut is required), hold the handle group with your hand to fix the switch angle, use an appropriate torque wrench, turn the thin nut (6-2) clockwise according to the torque in Table 1 to lock it, and then turn the thin nut (6-2) counterclockwise to loosen it.
- (7) Repeat the steps of 5, hold the handle group with your hand to fix the switch angle, use the appropriate torque wrench, and lock the thin nut (6-2) clockwise according to the torque in Table 1, if the hexagonal edge of the thin nut (6-2) is not perpendicular to the mandrel plane after the torque reaches the force, the lock is added to the vertical.
- (8) Install the anti-loosening gasket (13) back into place on the mandrel.



- (9) Attach the handle set, hold the handle with your hand to fix the opening angle, use the appropriate torque wrench to lock the thin nut (6-1) according to Table 1, and then turn the valve to close.
- (10) Tighten the bolt (10) according to 50% of the torque and the locking order shown on the right.
- (11) Tighten the bolt (10) according to 80% of the torque and the locking order shown on the right.
- (12) Tighten the bolt (10) according to 100% of the torque and the locking order shown on the right.
- (13) Confirm that there is no abnormality in the operation of the valve switch once on and off the valve, and then turn the valve to open.



6 · Product Maintenance

Open/close the valve regularly :

The valve is in the open or closed position for a long time, and it is recommended to cycle it once at a regular rate to ensure the operation of the valve.

Inspect the thin nut and joint surface screws :

The thin nut (6-1)/(6-2) and the bolt/nut (10) of the joint surface under the handle group should be checked regularly, and if necessary, the lock should be adjusted according to the torque and locking sequence (Table 1), and the lock should be made clockwise.

Size	Bonding surface bolt size	Torque Unit : n-m	Thin nut size	Torque Unit : n-m
DN15-DN20	M8*1.25	15	3/8"-24 UNF	11
DN25-DN32	M8*1.25	15	7/16"-20 UNF	11
DN40-DN50	M10*1.5	33	9/16"-18 UNF	17
DN65	M12*1.5	55	3/4"-16 UNF	20
DN80	M14*2.0	88	3/4"-16 UNF	20
DN100	M14*2.0	88	M24*3.0	22

Note: The friction coefficient of the above parameters using grease: 0.2, please pay attention to the friction coefficient of the grease during maintenance, if you have any doubts, please notify JDV. (Table 1)

Routine maintenance :

Routine maintenance is maintained to ensure optimal sealing function. If there is a leak in the upper seal (stem), tighten the mid nut with reference to the torque in Table 1 until the leakage stops.

7. Troubleshooting

Area	Problem Description	Solution
Internal leakage	Leakage of the ball and seat seal surface occurs	<ol style="list-style-type: none"> 1. Check whether there is any damage or scratches on the sealing surfaces of the valve ball (3) and ball pad (4). 2. Confirm that the ball (3) or valve seat (4) is damaged and replaced.
leakage	A leak occurred in the stem seal	<ol style="list-style-type: none"> 1. For tightening the thin nut (6-2), please refer to the torque reference for each specification (Table 1). 2. If leakage cannot be stopped, replace the V-shaped center port (8). 3. It is necessary to replace the small sheet (9) every time it is disassembled.
	Leakage occurred in the body/bonnet seal	<ol style="list-style-type: none"> 1. Please refer to (Table 1) for the locking nut (10). 2. If leakage cannot be stopped, replace the valve ball gasket (4).

Note: Please refer to the part number description of the structure drawing



**JDV
CONTROL
VALVES**

Just Delivering Value!

Welcome to contact us:

JDV CONTROL VALVES CO., LTD.

HEAD OFFICE & PLANT:

No. 6-1, Qingnian Rd., Yangmei Dist., Taoyuan City 326, Taiwan

TEL: + 886 3 4965066 E-mail : sales@jdv.com.tw Customer Service Line: 0800 359 995

➤ JDV CONTROL VALVES (SHANGHAI) / (JIANGSUI) CO., LTD.

TEL : +86 0515 88651666 TEL : +86 173 72229 6560

E-mail : webmaster@jdv.com.cn

➤ JDV JAPAN

TEL : +81 3 6860 8200 E-mail : tomfan@jdvjapan.co.jp

➤ JDV SINGAPORE

TEL : +65 6570 2218 E-mail : michael@jdv.com.sg

➤ JDV USA (NORTH AMERICA)

TEL: +1 832 939 9944 E-mail : sales@jdvusa.com

➤ ZUERCHER TECHNIK (EUROPE)

TEL : +41 0 61 975 10 10

➤ TAIWAN G-TECH CO., LTD.

TEL : + 886 3 4965066 (North) : + 886 5 6916393 (Central) : + 886 7 7887466 (South)

E-mail : twgttech@yahoo.com.tw

✉ : sales@jdv.com.tw

f : [@jdv.valves](https://www.facebook.com/jdv.valves)

g : [@jdv.valves](https://www.linkedin.com/company/jdv.valves)

whatsapp : [@jdv_valves](https://www.whatsapp.com/channel/00299a60000000000000000000000000)



<http://www.jdv.com.tw>



Android – pad&phone



IOS – ipad&iphone



Web android QR Code



JDV
CONTROL
VALVES

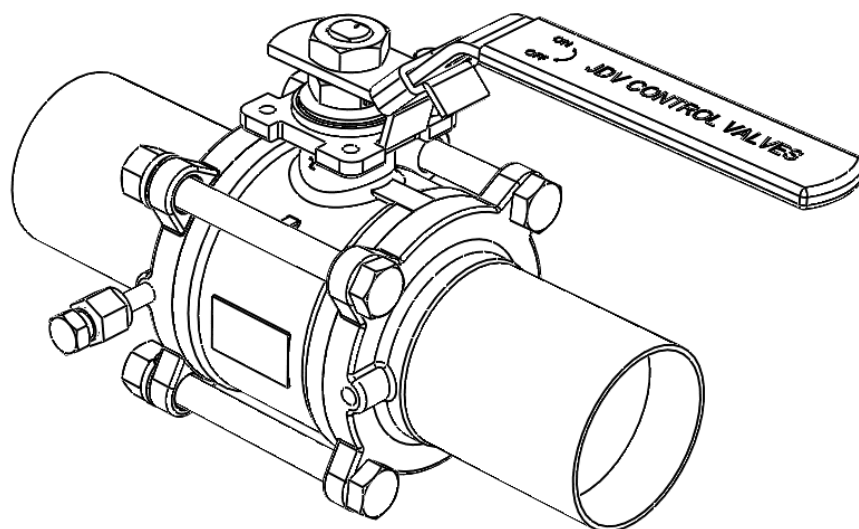
進典工業股份有限公司

JDV CONTROL VALVES CO.,LTD.

安裝、操作和維護手冊

JBF-E(DN15~DN100)

三片浮動式軟密封球閥



版本 : V 2.0

發行日期 : 2024/01



Product Manual



**JDV
CONTROL
VALVES**

目錄

一、使用前須知.....	3
1.1 安全性告知.....	3
1.2 拆卸程序注意事項.....	3
二、產品運送/保存/維護須知.....	4
2.1 保存及維護.....	4
2.1.1 保存已包裝之球閥.....	4
2.1.2 保存未包裝/已拆裝球閥.....	4
三、安裝準備須知.....	5
3.1 閥門資訊.....	5
四、產品說明 JBF-E.....	6
4.1 爆炸視圖.....	6
4.2 零件料表.....	6
4.3 維修包料表.....	6
五、安裝前準備.....	7
5.1 拆卸/維修.....	7
5.2 組裝.....	8
六、產品維護.....	9
七、故障排除.....	9





**JDV
CONTROL
VALVES**

一、使用前須知

- (1) 操作產品前請先仔細閱讀安裝操作維修手冊，避免不當使用造成損壞。
- (2) 請確認此份文件所提及之警告標誌及說明。
- (3) 請將安裝操作維修手冊放置於隨手可取之場所，便利查詢使用。



警告標語

標示	說明
	危險的情況，如果不能避免，可能導致輕微或中度損傷。
	如果不能避免，潛在的危險情況，可能導致死亡或嚴重傷害。



1.1 安全性告知

由設計工程師或產品使用之負責人員做基礎的產品規格確認，並檢查閥門和安裝設備之符合性，已確保使用的安全。

在安裝閥門前，須確認檢查操作條件，包含使用溫度範圍、最大工作壓力、流體特性、環境條件、安裝儀表等，是否符合閥門設定的使用工況。

	警告: 請不要超出閥門規格或技術參數表所示之限值，如果不能避免，可能導致死亡或嚴重傷害。
	注意: 1. 閥門可用於室內或室外。如在暴露大氣環境中使用，應注意閥門之腐蝕及無法避免之情況，可能導致輕微或中度損傷。 2. 閥門使用時經過較高的關斷壓力後，在較低的關斷壓力下的密封效果會降低。

1.2 拆卸程序注意事項

	警告: 1. 拆卸前，閥門必須處於半開位置，以保證球腔內的壓力完全釋放。 2. 所有有害物質必須保證被清除。
	注意: 1. 拆除產品必須由合格的操作人員操作。 2. 產品維修和拆卸建議聯繫 JDV 進典，避免因拆裝不當造成危險。



**JDV
CONTROL
VALVES**

二、產品運送/保存/維護須知

	<p>警告</p> <ol style="list-style-type: none">1. 移動或搬運時，必須按尺寸選擇合適的工具，正確使用設備和配件（如吊索、緊固物、掛鉤等），須考慮包裝明細的個別重量和全部的總重量。2. 吊升和處理球閥時，操作人員必須取得操作資格。不適當的吊升會造成閥體的變形或掉落而使閥損毀。3. 不要使用氣缸上設置之吊點或托架吊升閥，以免發生危險。4. 請勿將手動閥之把手做為拿取或吊升球閥用，會使手動閥之把手損壞或與閥體斷開分離，可能導致毀壞或人員傷害。
--	---

※ 產品應適當包裝好，以避免運送和存放於倉庫造成不必要損壞，尤其請特別注意下列預防措施：

運送

1. 球閥兩側端必須使用適當的密封蓋保護妥當，並在無塵室將球閥進行個別真空包裝，以確保閥門內部及外部清潔，並防止異物進入。
2. 裝箱的型式必須確保能安全運送到存放地點，抵達存放地點時請確認真空包裝未失效、紙箱或木箱保持完整狀態。

2.1 保存及維護

2.1.1 保存已包裝之球閥

1. 將包裝加以適當保護，以避免包裝之損壞。
2. 對於包裝應要有警語標示，以確保產品移動時造成不必要之損壞。如:吊掛重心。
3. 為避免連接端受損，必須使用密封蓋保護，以保證閥門內部清潔，防止異物進入。
4. 存放時請將閥門保持全開，部分開啟之狀態可能會使球墊變形。
5. 存放場所需保持乾淨及乾燥。
6. 請不要將產品暴露於風/雨中或直接日晒。
7. 如果產品存放一段時間，請定期檢查產品保存狀況。

2.1.2 保存未包裝 / 已拆裝球閥

1. 未包裝/已拆裝之潔淨閥必須經過禁油無塵清潔後，使用密封蓋保護連接端，並以真空包裝才能進行保存。
2. 經包裝完成之閥門，請依第一項“保存已包裝之閥門”方式進行保存。



JDV CONTROL VALVES

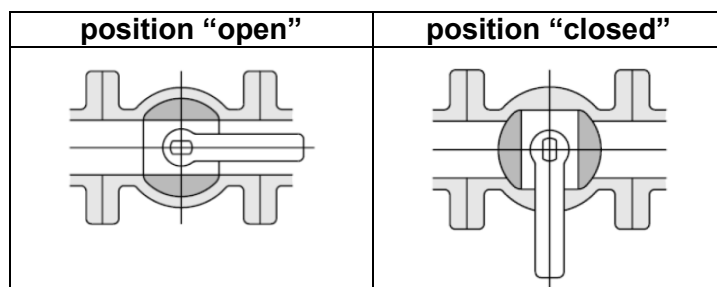
三、安裝準備須知

手動閥（把手操作）

1. 手動操作時，過度或操作不當會損壞定位桿或其他部件導致間接洩漏。

2. 依把手指示操作閥門，逆時針旋轉打開或順時針旋轉關閉。

* 球閥操作位置：請確認球閥閥桿頂部的平面方向與把手和管道平行，球閥處於開啟位置。



注意：

把手未確實定位於定位桿會導致閥門低於或超過行程，從而導致潛在的洩漏，這將影響閥門保修。

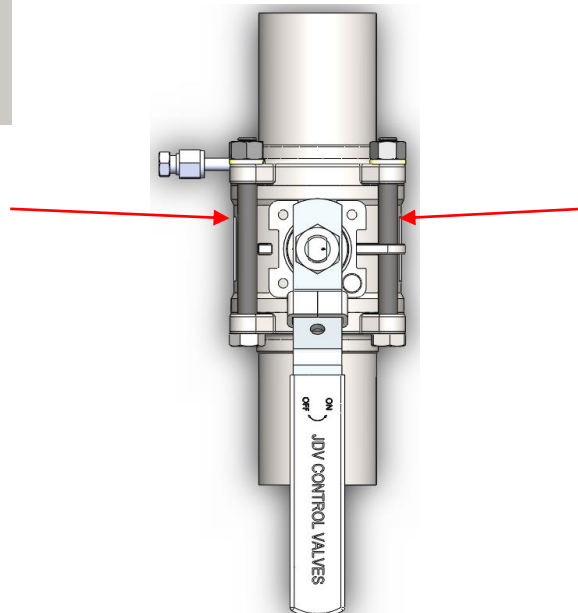
3.1 閥門資訊

閥門資訊位於閥體兩側和閥門銘版上

DN50
PN64
1.4408

左側閥門訊息內容

1. 閥門尺寸
2. 閥門壓力等級
3. 閥體材質



JDV
316L/PTFE
50A-5S
0.98 MPa
80°C Max

右側閥門訊息內容

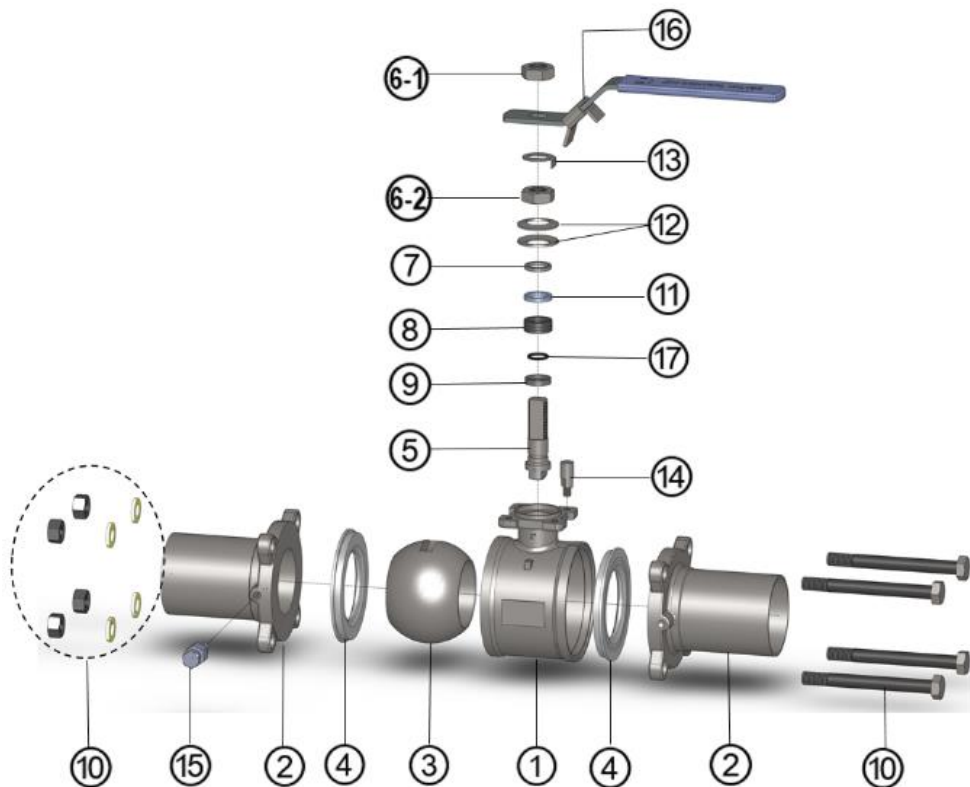
1. 品牌名稱
2. 蓋 / 球墊材質
3. 型號
4. 最大工作壓力
5. 最大工作溫度



**JDV
CONTROL
VALVES**

四、產品說明 JBF-E

4.1 爆炸視圖



Note:標註”★”零件為維修時推薦更換

4.2 零件料表

項次編號	部件名稱
1	本體
2	蓋
3	實心球
★4	球墊
5	扁心軸
6	薄型螺帽
7	心軸密封圈
★8	V 型中口
★9	小薄片
10	六角螺栓
	六角螺帽
	彈簧墊圈
11	心軸襯套
12	盤型彈簧
13	防鬆墊片
14	定位桿
15(Optional)	PURGE PORT 組合件
16	把手組 (含鎖扣,膠套)
★17	O-Ring

4.3 維修包料表

項次編號	部件名稱	數量
4	球墊	2pcs
8	V 型中口	1set
9	小薄片	1 pcs
17	O-Ring	1pcs



五、安裝前準備

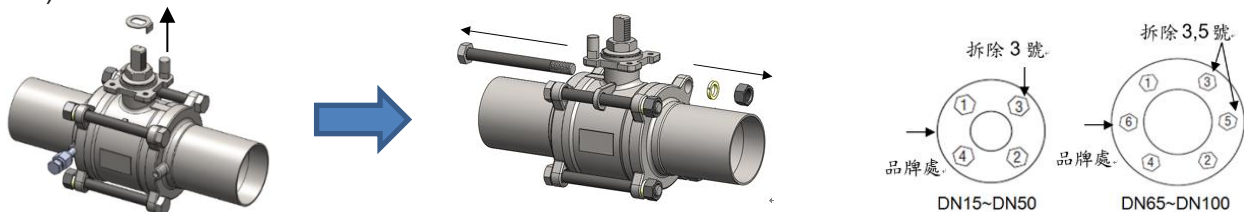
5.1 閥門連接前檢查

1. 本 IOM 中顯示的所有程序均適用於對接焊端。
2. 拆下出廠時安裝於閥門末端的藍色塑膠保護蓋。
3. 在查看孔的同時，打開和關閉閥門，確認球位置與槓杆位置或執行器指示器匹配。
4. 安裝時，閥門必須處於打開位置，以保護球體表面免受損壞。

5.2 拆卸/維修

★注意：執行前參閱拆卸程序注意事項，執行過程應避免料件損傷之行為。

1. 將閥門轉至全開
2. 請參考 JBF-E 爆炸視圖，以手握住把手固定開關角度，使用適當開口板手將薄型螺帽(6-1)以逆時針轉動鬆開並卸下薄型螺帽(6-1)及把手組(16)後，再將防鬆墊片(13)取出。
3. 將把手組安裝於心軸(不需鎖螺帽)，以手握住把手組固定開關角度，使用適當的開口板手將薄型螺帽(6-2)以逆時針轉動鬆開但不拆除。**※請勿使用把手以外的工具固定開關角度**
4. 請參考下圖指定之結合面螺帽(10)，以逆時針轉動鬆開後將彈簧墊圈、六角螺栓拆除(除了指定處外其餘不拆除)。

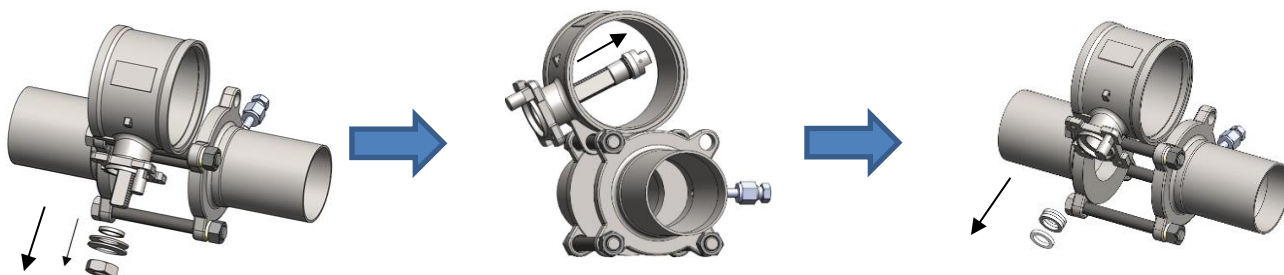


5. 如圖示方向將本體(1)旋出，並取出球墊(4)，並將把手組(16)安裝於心軸(不需鎖螺帽)，操作把手將閥門轉向關閉並取出實心球(3)。**※操作把手時請注意球會滾出**



6. 將薄型螺帽(6-2)拆除、盤型彈簧(12)及心軸密封圈(7)依序拆除，再將扁心軸(5)及小薄片(9)/O-Ring(17)向本體內部推入，由本體流道口取出。

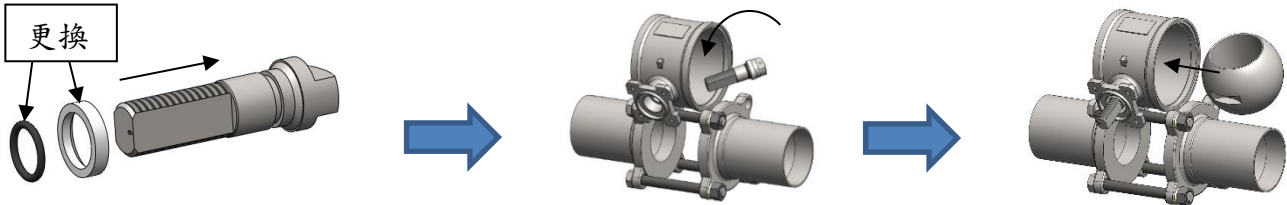
7. 請使用適當工具小心地取下心軸襯套(11)及 V 型中口(8)。**※請避免刮傷本體**



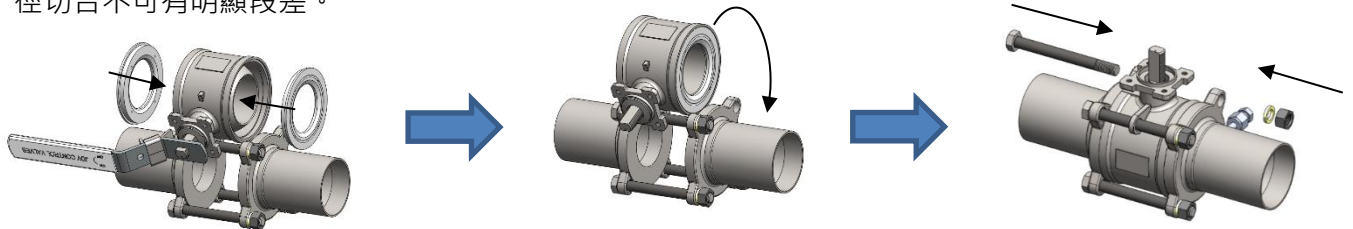
5.2 組裝作業

1. 將扁心軸(5)清潔乾淨或更換，再將更換完成的小薄片(9)及 O-Ring (17)套入扁心軸(5)後安裝回本體。
※ 請避免心軸撞傷本體

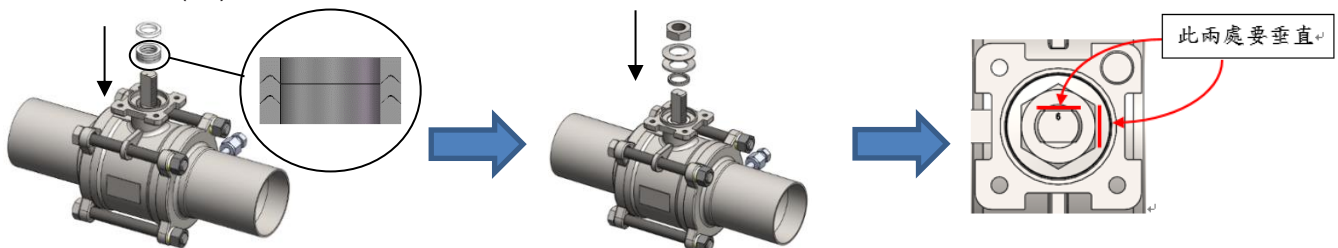
2. 將把手組(16)安裝於心軸(不需鎖螺帽)，操作把手組將閥門轉向關閉並組入實心球(3)



3. 完成後操作把手組(16)將閥門轉向開啟，將新的球墊(4)組入。
4. 將本體旋入，使本體(1)與蓋(2)管道口同軸，並將結合面螺帽(10)穿過兩端蓋之螺栓孔，依照圖示箭頭方向將彈簧墊圈安裝，再將螺帽順時針鎖付，請注意螺帽在此階段不要上扭力鎖緊，並確保本體外徑與蓋外徑切合不可有明顯段差。

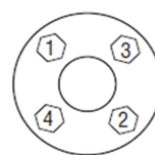


5. 將新品 V 型中口(8)裝入本體後再將心軸襯套(11)裝入本體中。 ※請注意 V 口方向朝下
再依序將心軸密封圈(7)、盤型彈簧(12)、薄型螺帽(6-2)裝入。
6. 將把手組安裝於心軸(不需鎖螺帽)，以手握住把手組固定開關角度，使用適當的扭力扳手，將薄型螺帽(6-2)依表 1 扭力以順時針轉動鎖固,然後再將薄型螺帽(6-2)以逆時針轉動鬆開。
7. 重複 5.步驟，以手握住把手組固定開關角度，使用適當的扭力扳手，將薄型螺帽(6-2)依表 1 扭力以順時針轉動鎖固，如扭力達到後薄型螺帽(6-2)六角邊未與心軸平面垂直，則加鎖至垂直。
8. 將防鬆墊片(13)安裝回心軸原位。

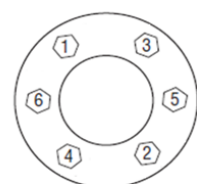


9. 裝上把手組，以手握住把手固定開關角度，使用適當的扭力扳手依表 1 扭力鎖固薄型螺帽(6-1),然後將閥門轉至關閉。

10. 請依(表 1)扭力的 50%及右圖鎖付順序將螺栓(10)鎖緊。
11. 請依(表 1)扭力的 80%及右圖鎖付順序將螺栓(10)鎖緊。
12. 請依(表 1)扭力的 100%及右圖鎖付順序將螺栓(10)鎖緊。
13. 將閥門開關各一次確認作動無異常，再將閥門轉至開啟。



DN15~DN50



DN65~DN100

六、產品維護

定期開啟/關閉閥門：

閥門長時間處於開啟或關閉位置，建議週期性循環一次，以確保閥門運行。

檢查薄型螺帽及結合面螺絲：

應定期檢查把手組下方薄型螺帽(6-1)/(6-2)及結合面螺栓/螺帽(10)，必要時請依(表1)扭力及鎖固順序進行調整鎖付後，並順時針在進行一次鎖付。

尺寸	結合面螺栓尺寸	扭力 單位：N-m	薄型螺帽尺寸	扭力 單位：N-m
DN15-DN20	M8*1.25	15	3/8"-24 UNF	11
DN25-DN32	M8*1.25	15	7/16"-20 UNF	11
DN40-DN50	M10*1.5	33	9/16"-18 UNF	17
DN65	M12*1.5	55	3/4"-16 UNF	20
DN80	M14*2.0	88	3/4"-16 UNF	20
DN100	M14*2.0	88	M24*3.0	22

備註：以上參數使用潤滑脂摩擦係數：0.2，維修時請注意潤滑脂之摩擦係數，如有疑慮請通知進典。(表 1)

例行維修：

保持日常維護以確保最佳密封功能。如果上密封（閥桿）出現洩漏，請參照表 1 中的扭矩緊固中口螺母，直至洩漏停止。

七、故障排除

區域	問題描述	解決方案
內漏	球與閥座密封面洩漏發生	<ol style="list-style-type: none"> 1. 請確認閥球(3)及球墊(4)密封面是否有損傷或刮痕。 2. 確認球(3)或閥座(4)有受損，請更換。
外漏	閥桿密封發生洩漏	<ol style="list-style-type: none"> 1. 鎖緊薄型螺帽(6-2)請參各規格扭力參照(表 1)。 2. 如無法止漏，請更換 V 型中口(8)。 3. 有必要每次拆卸時，更換小薄片(9)。
	閥體/閥蓋密封發生洩漏	<ol style="list-style-type: none"> 1. 鎖緊螺帽(10)請參照(表 1)。 2. 如無法止漏，請更換閥球墊(4)。

註:請參照結構圖零件編號說明



JDV
CONTROL
VALVES

Just Delivering Value!

聯絡我們

進典工業股份有限公司

總公司與工廠:

臺灣桃園市楊梅區青年路 6-1 號

電話 : + 886-3-4965066 信箱 : sales@jdv.com.tw 客服專線 : 0800-359-995

➤ 上海進典/江蘇進典

電話 : +86 0515 8865 1666 手機 : +86-173-72229-6560

信箱 : webmaster@jdv.com.cn

➤ 日本進典

電話 : +81 3 6860 8200 信箱 : tomfan@jdvjapan.co.jp

➤ 新加坡進典

電話 : +65 6570 2218 信箱 : michael@jdv.com.sg

➤ 美國進典(北美洲)

電話 : +1 832 939 9944 信箱 : sales@jdvusa.com

➤ ZUERCHER TECHNIK (歐洲)

電話 : +41 0 61 975 10 10

➤ 台灣吉悌科技

電話 : + 886 3 4965066 (北區) : + 886 5 6916393 (中區) : + 886 7 7887466 (南區)

信箱 : twgtech@yahoo.com.tw



: sales@jdv.com.tw



: [@jdv.valves](https://www.facebook.com/jdv.valves)



: [@jdv.valves](https://www.line.me/jdvalves)



: [@jdv_valves](https://www.wechat.com/p/jdvalves)



<http://www.jdv.com.tw>



Android - pad&phone



IOS - ipad&iphone



Web android QR Code